

AIRBUS 320-214 YOM 2012



AIRCRAFT TECHNICAL DATA

Title	Detail Information
Product:	Airbus A320 -200 (214)
Year of Manufacturing (YOM):	2012
Facilities:	European (see attachment)
Availability:	Up to 10
Service and guarantee:	directly from Airbus, which begins after handover
FIX Unit Price Aircraft:	FCO
Total - Price	FCO

AIRCRAFT TECHNICAL DATA	
Aircraft Type	Airbus A320-214
Engine Model:	CFM56-5B4/P
Date of Manufacture	2012
Noise Abatement Compliance	Stage III iaw. ICAO Annex 16
Interior Arrangement	174 All Tourist
Lavatory:	3
Galleys (with chiller)	G1,G5 (Bucher), with ATLAS Boxes & Trolleys

AIRFRAME DATA	
Total Hours	0 FH
Total Cycle	0 Cycles

WEIGHT AND FUEL DATA	
Maximum Taxi Weight	73,900 kg
Maximum Take-off Weight	73,500 kg
Maximum Landing Weight	64,500 kg
Maximum Zero Fuel Weight	61,000 kg
Operational Empty Weight	TBD
Maximum Usable Fuel Capacity	19,088 kg

MAINTENANCE PROGRAM	
	The Operator's approved Maintenance Program is conform to the Manufacturer's MPD.
Base Check interval	6,000 FH 4,500 FC, 20 Months (whichever comes first)
Line Check interval	750 FH, 750 FC, 120 Days (whichever comes first)
Last Base Maint. Check performed	N/A
Next Due Base Maint. Check	1C at 6,000 FH or 4,500 / Date of Manufacturing + 20 Months

ENGINE DATA	Position #1	Position #2
Engine Model:	CFM56-5B4/P	CFM56-5B4/P
Thrust Rate	27K lbs	27K lbs
Total Hours:	TSN 0	TSN 0
Total Cycles:	TSN 0	TSN 0
Last SV:	N/A	N/A
TSLSV:	Manufacture	Manufacture
1st LLP Limiter:	Several LLP's at 20.000 CYC	Several LLP's at 20.000 CYC
Remaining CYC of 1st Limiter	20,000 CYC	20,000 CYC

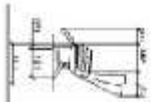
LANDING GEAR	MFG Date	CYC since New
Nose Landing Gear	2012	0 CYC
Left Main Landing Gear	2012	0 CYC
Right Main Landing Gear	2012	0 CYC
Interval for LDG OH	20,000 CYC or 10 Years (w/e comes first)	
BRAKES Manufacture	Messier-Bugatti	

APU	
Manufacturer	Honeywell
Model	131-9A
Total APU Hours	0 APU Hours
Total APU Cycles	0 APU Cycles
APU LLP OH Interval	30,000 APU Cycles
Rem. APU Cycles to 1st Limiter	30,000 APU Cycles

INTERIOR		
A 25 – Equipment & Furnishing	QTY	MANUFACTURER
Seats Tourist (Leather Covers)	174	Recaro
Galley 1 (chilled)	1	Bucher
Galley 5 (chilled)	1	Bucher
Ovens	4	Sell

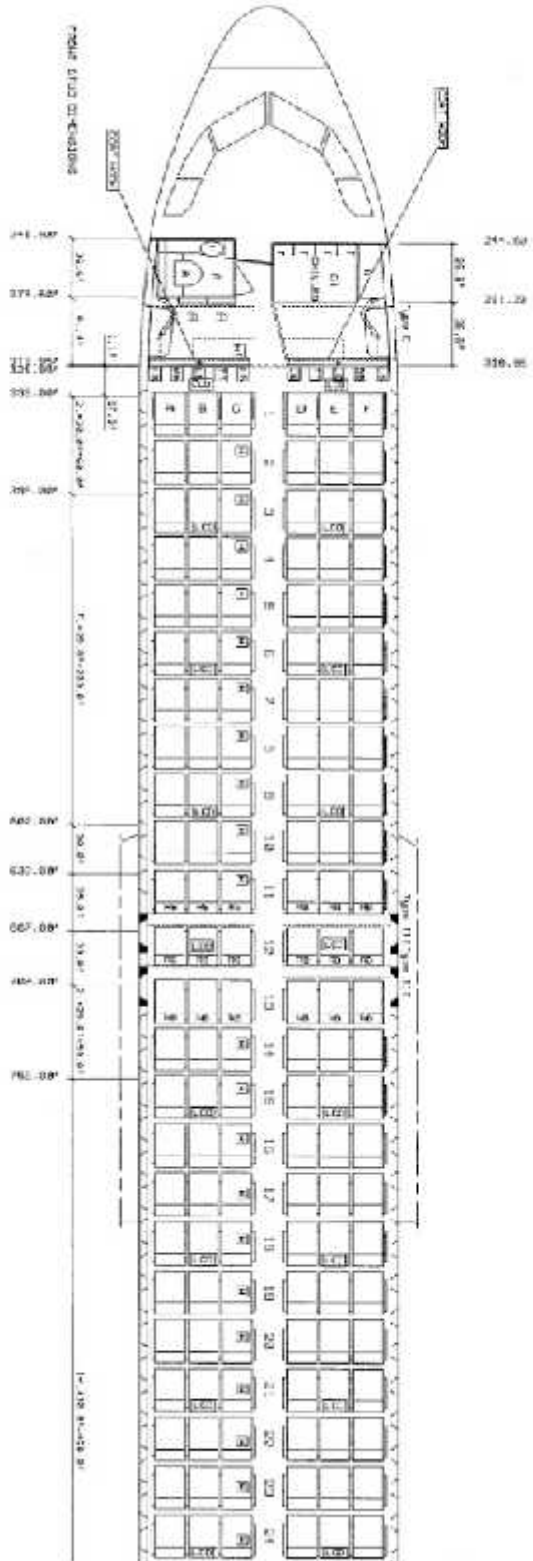
AVIONICS		
ATA 22 – Automatic flight Controls	QTY	MANUFACTURER
FMGC	2	Thales
FCU	1	Smith
ATA 23 – Communication		

HF transceiver	1	Rockwell Collins
Transceiver VHF/COMM	3	Thales
CIDS Director	2	KID
FAP Panel	1	KID
ATSU	1	Airbus
ELT	1	Thales
Integrated CDSS System (Controller)	1	Securaplane
ATA 23 – Passenger Entertainment System – Audio		
Main Multiplexer	1	Panasonic
Video Monitor 10" LCD L/H	10	Panasonic
Video Monitor 10" LCD R/H	10	Panasonic
Video System Control Unit	1	Panasonic
Video Reproducer H18	2	Panasonic
CD Reproducer, Audio	1	Panasonic
Flight Track Server	1	Lufthansa
ATA 27 – Flight Controls		
ELAC	2	Thales
SEC	3	Thales
ATA 31 – Indication and Recording System		
Flight Data Recorder	1	L3
Cockpit Voice Recorder	1	L3
FDIMU	1	Sagem
Printer Multi-Port FANS	1	Honeywell
MDDU	1	Sagem
DMC	3	Thales
Display Unit	6	Thales
ATA 34 – Navigation		
Multi Mode Receiver ILS/GPS	2	Thales
Weather Radar Multiscan Transceiver	1	Rockwell Collins
T2CAS Computer	1	Thales
ATC-Mode S Transponder	2	L3
Radio Altimeter (LRRA) Transceiver	2	Thales
ADIRU	3	Northrop Grumman
MCDU	2	Thales
VOR Marker Beacon	2	Rockwell Collins
DME	2	Rockwell Collins
ADF	1	Rockwell Collins
Integrated Stby Indication Sys, (ISIS)	1	Thales



NO.	DESCRIPTION	QTY	UNIT	AMOUNT
1
2
3
4
5
6
7
8
9
10
11
12
13
14
15
16
17
18
19
20
21
22
23
24
25
26
27
28
29
30
31
32
33
34
35
36
37
38
39
40
41
42
43
44
45
46
47
48
49
50
51
52
53
54
55
56
57
58
59
60
61
62
63
64
65
66
67
68
69
70
71
72
73
74
75
76
77
78
79
80
81
82
83
84
85
86
87
88
89
90
91
92
93
94
95
96
97
98
99
100

NOTE : ALL SEPTIS DIMENSIONS REFERRING TO FRONT STUD.



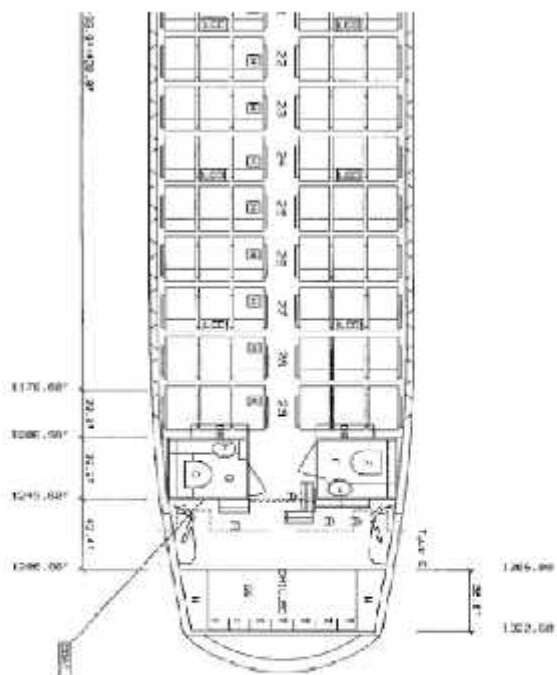
241.50
211.29
210.95
209.21
208.00
206.79
205.58
204.37
203.16
201.95
200.74
199.53
198.32
197.11
195.90
194.69
193.48
192.27
191.06
189.85
188.64
187.43
186.22
185.01
183.80
182.59
181.38
180.17
178.96
177.75
176.54
175.33
174.12
172.91
171.70
170.49
169.28
168.07
166.86
165.65
164.44
163.23
162.02
160.81
159.60
158.39
157.18
155.97
154.76
153.55
152.34
151.13
149.92
148.71
147.50
146.29
145.08
143.87
142.66
141.45
140.24
139.03
137.82
136.61
135.40
134.19
132.98
131.77
130.56
129.35
128.14
126.93
125.72
124.51
123.30
122.09
120.88
119.67
118.46
117.25
116.04
114.83
113.62
112.41
111.20
110.00
108.79
107.58
106.37
105.16
103.95
102.74
101.53
100.32
99.11
97.90
96.69
95.48
94.27
93.06
91.85
90.64
89.43
88.22
87.01
85.80
84.59
83.38
82.17
80.96
79.75
78.54
77.33
76.12
74.91
73.70
72.49
71.28
70.07
68.86
67.65
66.44
65.23
64.02
62.81
61.60
60.39
59.18
57.97
56.76
55.55
54.34
53.13
51.92
50.71
49.50
48.29
47.08
45.87
44.66
43.45
42.24
41.03
39.82
38.61
37.40
36.19
34.98
33.77
32.56
31.35
30.14
28.93
27.72
26.51
25.30
24.09
22.88
21.67
20.46
19.25
18.04
16.83
15.62
14.41
13.20
12.00
10.79
9.58
8.37
7.16
5.95
4.74
3.53
2.32
1.11
0.00



080 090 100 110 120 130 140 150 160 170 180 190 200 210 220 230 240 250 260 270 280 290 300 310 320 330 340 350 360 370 380 390 400 410 420 430 440 450 460 470 480 490 500 510 520 530 540 550 560 570 580 590 600 610 620 630 640 650 660 670 680 690 700 710 720 730 740 750 760 770 780 790 800 810 820 830 840 850 860 870 880 890 900 910 920 930 940 950 960 970 980 990 1000

REV	DESCRIPTION	DATE
0	INITIAL RELEASE	
1	INITIAL CABIN REVISION	

Airbus



- 01 MEN TRIBLE
- 02 JTB L-SELS
- 03 STRECHEN L-TRETTAR WOOD
- 04 LJO STRECH
- 05 HODSTRECH 44-114
- 06 8 IN. COO-0.98 WITH 03048R
- 07 8 IN. COO-0.98 WITH 03048R
- 08 WJULUS C.O.B.
- 09 NO REC. THE MATH OF 18074 7419
- 10 NO REC. THE MATH OF 18074 7419
- 11 IN OVERCAB 150L.C

SERVICES 1							
ALL LOD IN DEMO - PSU DEMONSTRATION							
CABIN CONFIGURATION	F/C	B/C	Y/C	Y/C2	TOTAL		
PASSENGER SEATS :	0	0	171	0	171		
FOODCDS			287/287				
GAL. BY :							
- GAL. BY DOUBLE CREST	0	0	277	0	277		
- GAL. BY DOUBLE CREST	0	0	11.0	0	11.0		
- PROLES DIT	0	0	11.0	0	11.0		
- LAVATORY	0	0	2	0	2		
LAVATORIES :							
- FMS / LAVATORIES	0	0	2	0	2		
CURT DIBSET :							
- CURT DIBSET (RECH / DEMO)	0	0	2.0	0	2.0		
STORAGE :							
ATTENDANT SEATS :							
CHILD REST SEAT :							
AS20-202 CABIN CONFIG FOR :							
DATE :							
CONFIG :							
REV :							
REV NO :							